



## Product Highlights

### Power over Ethernet

IEEE 802.3af compliant PoE on port 1

### Plug-and-play Installation

Requires no configuration or software

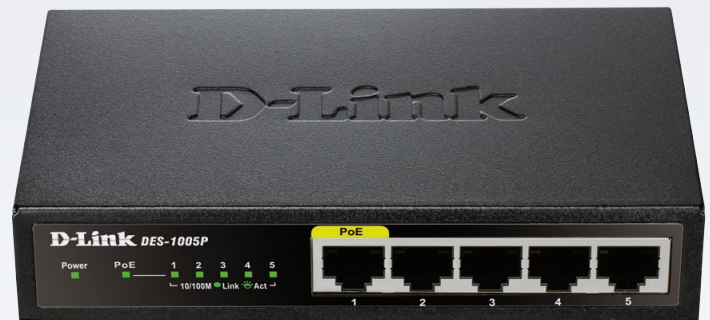
Installation is simple and easy

### Eco-Friendly

Innovative design runs quiet cool and clean, saving power automatically

### Silent Operation

Fanless design provides noise free operation



Limited  
Lifetime  
Warranty

## DES-1005P

# 5-Port 10/100 Unmanaged Desktop Switch with one PoE Port

## Features

### High-Speed Networking

- Five 10/100 Mbps Fast Ethernet Ports
- Full/half-duplex for Ethernet/Fast Ethernet speeds

### Power over Ethernet

- IEEE 802.3af compliant PoE on port 1
- 15.4W PoE power budget

### Reliability

- IEEE 802.3x flow control
- Store-and-forward switching scheme
- Fanless – silent operation

### Easy Setup

- Plug-and-play installation
- Auto MDI/MDIX crossover for all ports

The D-Link DES-1005P 5-port 10/100 Unmanaged Desktop Switch with one PoE Port allows you to easily connect a Power over Ethernet (PoE) device such as a wireless access point (AP), IP camera, or IP phone to your existing network. The switch also gives you the opportunity to add additional Ethernet devices such as computers, printers, and Network Attached Storage (NAS) onto your network. This compact PoE switch operates quietly, making it ideal for use in virtually any room or office.

## Power Over Ethernet (PoE)

The first port of the DES-1005P supports the IEEE 802.3af PoE standard. The port supplies a total PoE budget of 15.4 watts, allowing users to attach any IEEE 802.3af compliant device to the DES-1005P. Use PoE for applications that are far from power outlets or when you want to minimize the clutter of extra cables.

## Conserves Energy

The DES-1005P makes use of D-Link Green™ eco-friendly technology, providing energy savings, reduced power consumption, and a longer product life without sacrificing operational performance or functionality. This switch helps to conserve energy through methods such as Link Status and Cable Length Detection. The Link Status feature automatically powers down ports that have no link, allowing the switch to save substantial amounts of energy by cutting power for unused ports or ports connected to computers that have been shut down. It can also detect connected cable lengths, and adjust power usage accordingly, helping you save energy without affecting networking performance. In addition, the fan-less design extends the switch's life and also reduces noise.

#### Auto MDI/MDIX Crossover

All ports support automatic MDI/MDIX crossover, eliminating the need for crossover cables or uplink ports. Each port can be plugged directly to a server, hub, router, or switch using regular straight-through twisted pair Ethernet cables.

#### Technical Specifications

DES-1005P



#### General

Number of Ports	Five 10/100 Mbps Ports including one PoE enabled
Switching Capacity	1Gbps
Standards	IEEE 802.3 10BASE-T Ethernet IEEE 802.3u 100BASE-TX Fast Ethernet ANSI/IEEE 802.3 NWay auto-negotiation IEEE 802.3x Flow Control IEEE 802.1p QoS
PoE Features	Supports IEEE 802.3af Supplies up to 15.4 watts of power to PD
Data Transfer Rates	Ethernet: • 10 Mbps (half duplex) • 20 Mbps (full duplex) Fast Ethernet: • 100 Mbps (half duplex) • 200 Mbps (full duplex)
Network Cables	10BASE-T: • UTP CAT 3, 4, 5/5e (100 m max) • EIA/TIA-586 100-ohm STP (100 m max) 100BASE-TX • UTP CAT 5/5e (100 m max.) • EIA/TIA-568 100-ohm STP (100 m max.)
Media Interface Exchange	Auto MDI/MDIX adjustment for all ports
LED Indicators	Per port: Link/Activity/Speed/PoE Status Per device: Power/PoE Max
Transmission Method	Store-and-forward
MAC Address Table	2k Entries per device
MAC Address Learning	Automatic update

# DES-1005P 5-Port 10/100 Unmanaged Desktop Switch with One PoE Port

Packet Filtering/ Forwarding Rates	Ethernet: 14,880 pps per port Fast Ethernet: 148,800 pps per port
RAM Buffer	64 KBytes per device
D-Link Green	IEEE 802.3az Energy Efficient Ethernet (EEE) Link status detection power saving Cable length detection power saving
<b>Physical</b>	
Power Inputs	Switching 48 V/0.5 A Level V power adapter
Power Consumption	Power On (Standby): DC input: 0.9 watt AC input: 1.8 watts Maximum (PoE Off) DC input: 2.05 watts AC input: 2.7 watts Maximum (PoE On) DC input: 17.29 watts AC input: 20.2 watts
MTBF	324,616 hours
Operating Temperature	32 to 104 °F (0 to 40 °C)
Storage Temperature	104 to 158 °F (-40 to 70 °C)
Storage Humidity	0% to 95% RH non-condensing
Dimensions	5.5 x 3.3 x 1.1 inches (140 x 85 x 28 mm)
Certifications	FCC Class B ICES-003 Class B cUL
<b>Warranty</b>	
Warranty	Limited Lifetime <sup>1</sup>
<b>Ordering Information</b>	
<i>Part Number</i>	<i>Description</i>
DES-1005P	5-Port 10/100 Unmanaged Desktop Switch with One PoE Port

<sup>1</sup>Limited Lifetime Warranty available only in the USA. All references to speed are for comparison purposes only.

Updated 10/1/14 (Hardware Rev. A1)

## For more information

**U.S.A.** | 17595 Mt. Herrmann Street | Fountain Valley, CA 92708 | 800.326.1688 | dlink.com

©2014 D-Link Corporation/D-Link Systems, Inc. All rights reserved. D-Link, the D-Link logo, and D-ViewCam are trademarks or registered trademarks of D-Link Corporation or its subsidiaries in the United States and/or other countries. Other trademarks or registered trademarks are the property of their respective owners. Visit [www.dlink.com](http://www.dlink.com) for more details.

**D-Link**<sup>®</sup>  
Building Networks for People